



Main Features

- Wetted parts stainless steel 1.4404 (316L)
- Flush diaphragm
- Compact design

Applications

- Laboratory & Medical
- Oil & Gas / Chemical
- Water & Waste water
- Energy
- Transportation & Logistics
- Machinery

Description

This chemical seals with threaded process connection are used to protect pressure gauges from high temperatures, aggressive or corrosive fluids.

With the flush diaphragm these seals are used especially for fluids with high viscosity or a tendency to crystallize. They avoid that the medium flows into the instrument, where deposits could be built and generate wrong measurements or pollution of the process.

Chemical seals can be mounted to mechanical pressure gauges, switches or transmitters directly or with a cooling element. The filling fluid of the measuring system has to be chosen compatible to the application.

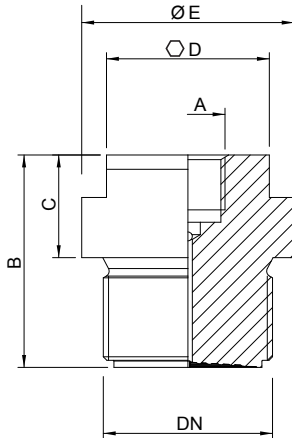
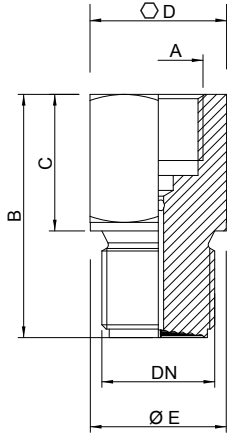
Pressure ranges	0 ... 1 bar to 0 ... 600 bar (see table below)
Body material	Stainless Steel 1.4404 (AISI 316L)
Diaphragm	Stainless Steel 1.4404 (AISI 316L)
Working temperature	-60...200°C (depending on the filling fluid)
Filling fluids	LRS1 (vaseline : -15 ... +150°C) LRS2 (silicone DC510 : -60 ... +150°C) LRS3 (silicone DC550 : -20 ... +200°C)

Minimum pressure ranges ¹⁾

DN	Pressure gauges		P max.
	NS 50-63 mm	NS 80-100-150-160 mm	
G 1/2 1/2 NPT	0 ... 100 bar	0 ... 250 bar	600 bar
G 3/4 3/4 NPT	0 ... 16 bar	0 ... 60 bar	600 bar
G 1 1 NPT	0 ... 10 bar	0 ... 25 bar	250 bar
G 1 1/2 1 1/2 NPT	0 ... 1.6 bar / -1 ... 3 bar	0 ... 4 bar / -1 ... 5 bar	160 bar
G 2 2 NPT	0 ... 1 bar / -1 ... 0 bar	0 ... 1 bar / -1 ... 0 bar	40 bar

¹⁾ Valid for -20°C < T < 100°C. Other temperature ranges on request

Dimensions - Types of mounting



Code	DN	A	B	C	Ø E	Ø D	Weight kg
D055-2H14	G ½	G ¼	51	26	26	27	0.17
D055-2L14	G ½	G ½	57	32	26	27	0.17
D055-2H24	½ NPT	G ¼	51	26	26	27	0.17
D055-2L24	½ NPT	G ½	57	32	26	27	0.17
D055-2H15	G ¾	G ¼	52	27	31.85	32	0.27
D055-2L15	G ¾	G ½	57	32	31.85	32	0.27
D055-2L25	¾ NPT	G ½	57	32	31.85	32	0.27

Code	DN	A	B	C	Ø E	Ø D	Weight kg
D055-2L16	G 1	G ½	55	29	40	30	0.37
D055-2L26	1" NPT	G ½	55	29	40	30	0.37
D055-2L1A	G 1 ½	G ½	60	29	60	46	0.95
D055-2L2A	1 ½ NPT	G ½	60	29	60	46	0.95
D055-2L1C	G 2	G ½	62	29	70	54	1.43
D055-2L2C	2" NPT	G ½	62	29	70	54	1.43

Ordering details D055

D055	-	X	X	XX
------	---	---	---	----

Model	Flush diaphragm seal with screwed process connection	D055	-		
Body material	Stainless Steel 1.4404 (AISI 316L)			2	
Instrument connection	G ½ G ¼ ²⁾				L H
Process connection	G ½ ³⁾ ½ NPT ³⁾ G ¾ ¾ NPT G 1 1 NPT G 1 ½ 1 ½ NPT G 2 2 NPT				14 24 15 25 16 26 1A 2A 1C 2C

²⁾ Available only with process connection G ½, ½ NPT and G ¾
³⁾ Not available with capillary